

P62 Machine Control Replacement

Applies to
P62 consoles.

Tools Required:

- #1 Phillips screwdriver
- 5/32" hex wrench
- Electrostatic discharge (ESD) mat and wrist strap

Parts Required:

QTY	Part Number	Description
1	300350-110 (double toggle) or 300350-112 (single toggle)	Machine control assembly
1	13012-010	Nyogel

Removal Instructions:

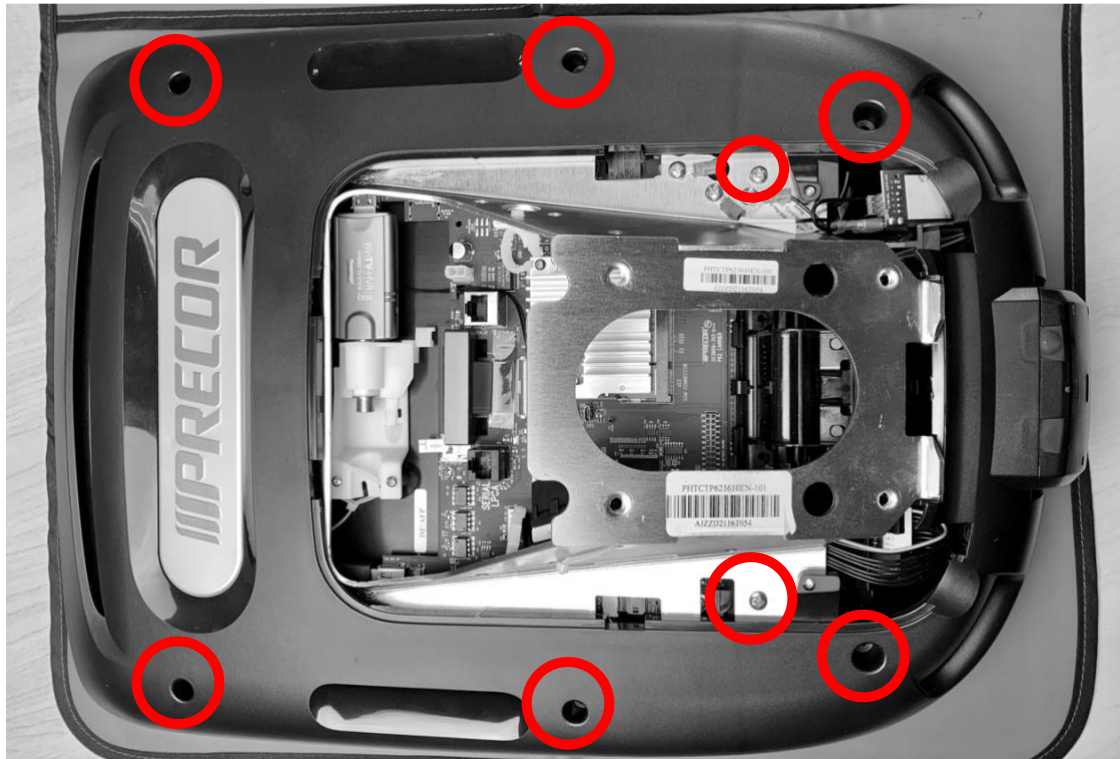
Review entire procedure before starting.

1. Remove rear access panel.
2. Remove the four console mounting bolts and disconnect all wires. See [Console Installation and Removal](#).
3. Remove the console from the unit and place on an electrostatic discharge (ESD) mat.



Caution: Failure to properly use an ESD mat and wrist strap can result in damage to the console.

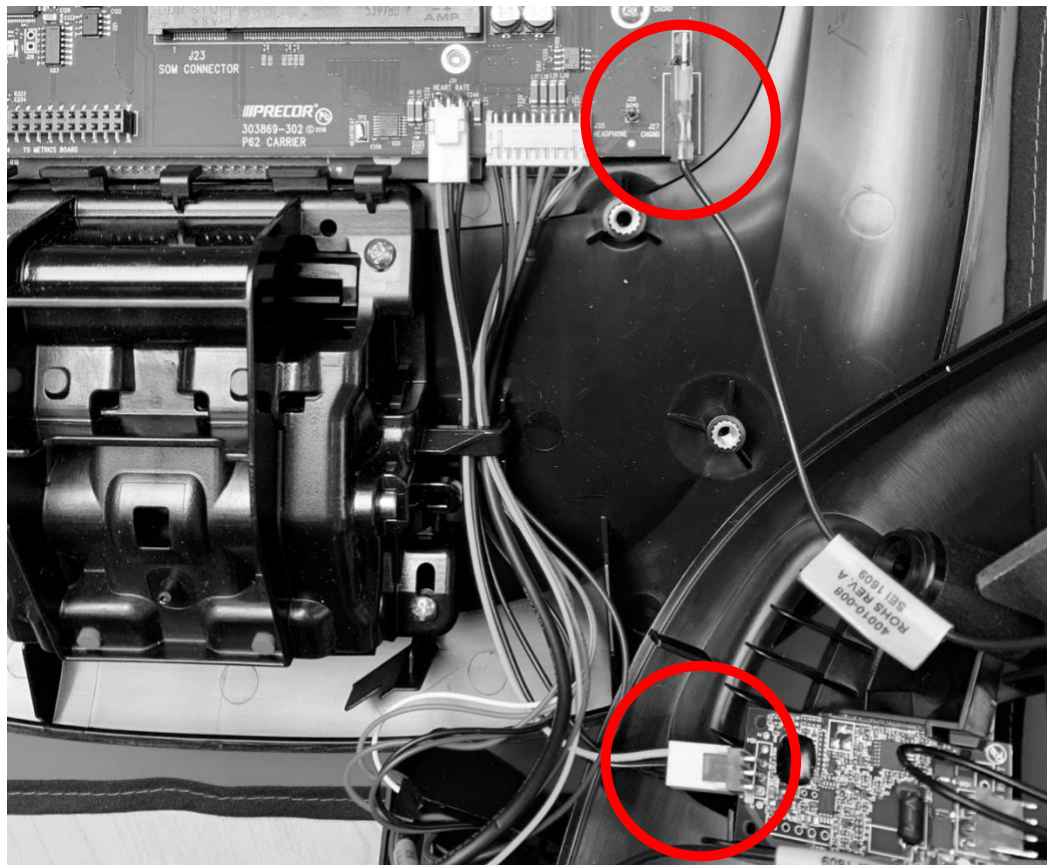
4. Remove the eight Phillips screws securing the back cover.



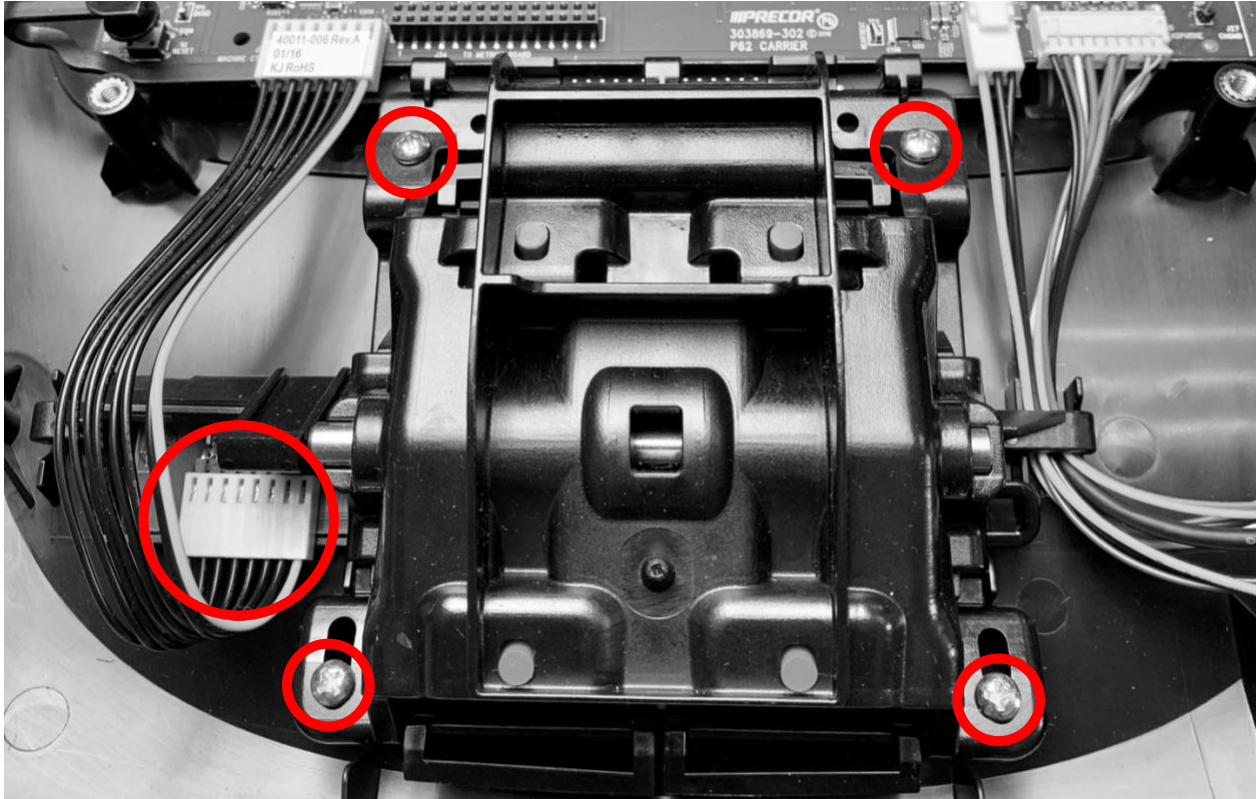
5. Remove the chin assembly. Turn sideways to slip through the opening.



6. Gently flip over the cover and disconnect the ground wire and heart rate connectors. Leave the other wires attached and set the cover down.

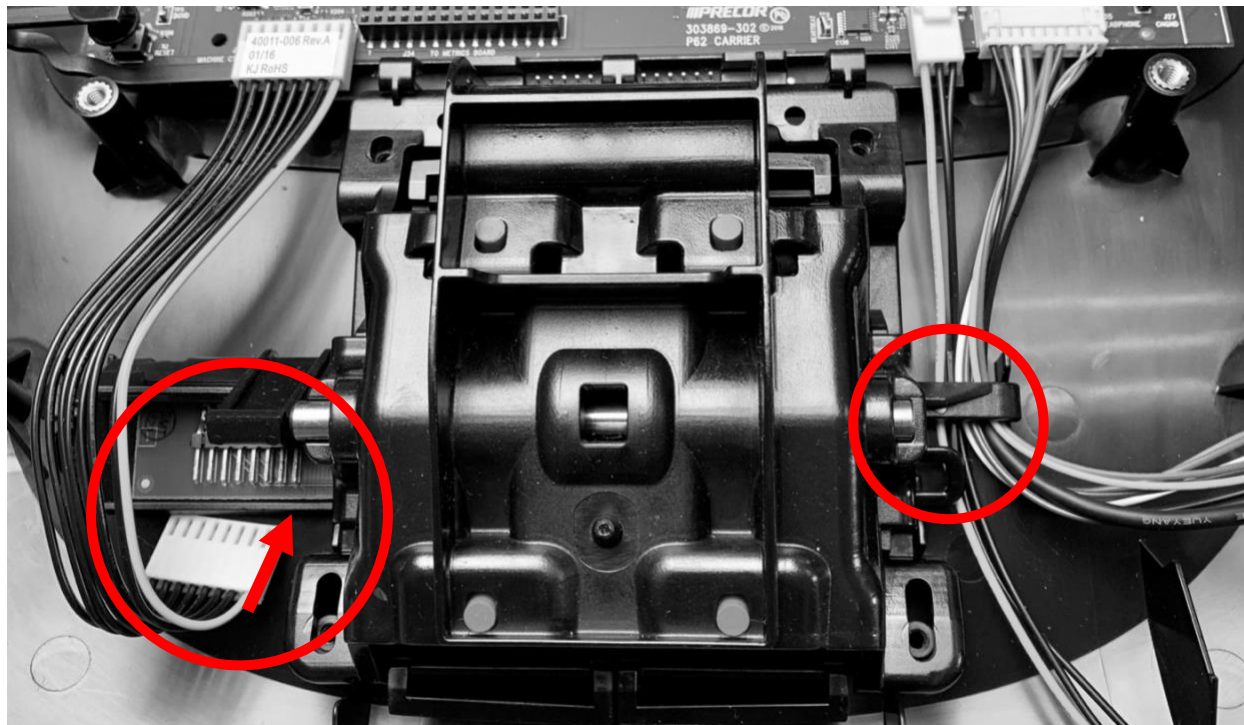


7. Disconnect the machine control wire and remove the four Phillips screws to remove the machine control.



Installation Instructions:

1. Route HHR and Chin Assembly cables through channel to the right of the machine control. Apply a small amount of Nyogel to the machine control pins and connect the machine control cable. The yellow wire goes to Pin 1 (yellow wire is placed on the right side).



2. Secure the machine control using the four machine control screw fasteners.
3. Reconnect the heart rate connector and ground wire.
4. Feed the chin through the back cover and set the cover in place. Make sure the wires are not pinched and the machine control is free of any obstacles.
5. Secure the back cover using the 8 screw fasteners.
6. Snap the chin assembly in place.
7. Reinstall the P62. Refer to P62 installation instructions at www.Precor.com.
 - Secure Coax cable with a new zip-tie.
 - Route the power cable through the ferrite. The cable should form a loop so it passes twice through the ferrite.
 - Connect the data cable



Caution: Do not plug the data cable into the Ethernet port. This will damage the display when powered up.

8. Verify operation and return to service.