

## Discovery Series DSL 714 Abdominal machine pivot bolt torque update

**Applies to:** DSL 714 Abdominal Crunch

### Issue/Symptoms

Current specified pivot bolt torque setting is not sufficient to keep bolts tight during extended use and may loosen.

### Resolution

Re-torque pivot bolts to new higher torque specification, from 42 ft-lbs (57 Nm) to 125 ft-lbs (169.5 Nm).

### Tools required

- 5/16" & 3/8" Hex bit sockets
- Torque wrench, Range: 125 ft-lbs (169.5 Nm) minimum
- Loctite 243

### Procedure

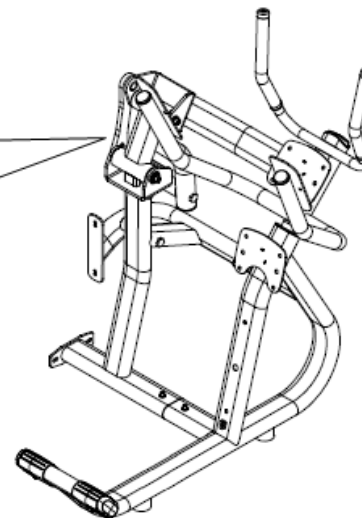
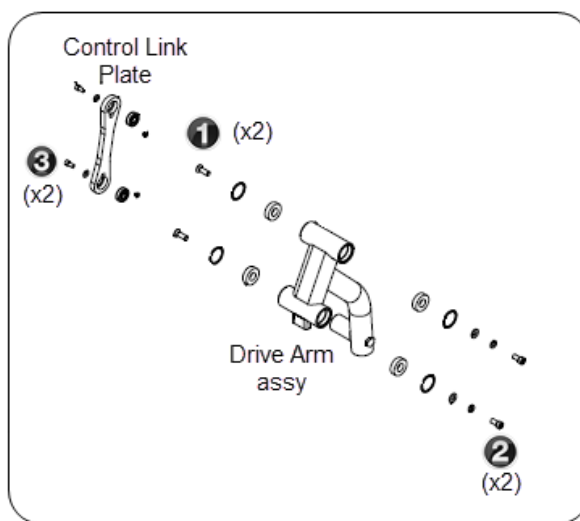
Review entire procedure before starting.

- 1 Re-torque two pivot bolts **2** (PPP000CWACN050150 1/2-13X1.5 cap head screw) to 125 ft-lbs (169.5 Nm).using a 3/8" hex bit socket.
- 2 Remove control link plate by removing two bolts **3** (PPP000CWACN038100 3/8-16 X1.00 cap screw) using a 5/16" hex bit socket.
- 3 Remove one pivot bolt **1** (PPP00CWMACCN050150 1/2-13X1.25 cap head screw) using a 5/16" hex bit socket. Apply Loctite 243 to shaft threads and re-torque to 125 ft-lbs (169.5 Nm). Repeat process for the second pivot bolt, only remove one bolt at a time.



**Important:** Only remove one pivot bolt **1** at a time. One pivot bolt holds the assembly in position while the other bolt is replaced.

- 4 Reinstall control link plate and secure with two bolts **3** (PPP000CWACN038100 3/8-16 X1.00 cap head screw) using a 5/16" hex bit socket. Torque to 42 ft-lbs (65.5 Nm).
- 5 Verify machine operation and return to service.



DSL 714 Abdominal