

TRM800 Motor Controller Fan Replacement

Applies to

All TRM800.v2 treadmills

Issue/Symptoms

The motor controller (MC) fan may stop due to premature motor bearing failure. This causes the treadmill to stop the workout and trigger an error event code 14 “Fan Fail (Lower PCA)” to be logged. The treadmill will continue to repeat the failure mode until the MC fan is repaired.

Resolution

Replace the MC fan with an improved fan with longer life bearings.

Tools required

- #2 Phillips screwdriver
- 1/8” standard screwdriver
- 5/16 socket

Parts required

QTY	Part Number	Description
1	PPP00000304461101	304461-101 ASSY,FAN,24DC,1.38" LEADS,W/CONNECTOR

Procedure

Review entire procedure before starting.

- 1 Switch the power OFF and unplug the power cord.
- 2 Remove hood.
- 3 Remove the Motor Controller (MC), refer to service manual “Motor Controller Removal” procedure.
- 4 Use a #2 Philips screwdriver to remove the MC top cover **1** screw fastener.
- 5 Use a small standard screwdriver to release the four mounting tabs and carefully lift the MC top cover **1** from the main housing (see fig. 1). Disconnect the power cable connector and remove the top cover. Retain fastener for installation.
- 6 Use a #2 screwdriver to remove the four fan fasteners and remove the fan grill **2** (see fig. 1). Retain grill and fasteners for installation.
- 7 Carefully lift the fan and remove from top cover. Guide the power cable and connector through the cable routing opening while removing. Discard the fan.

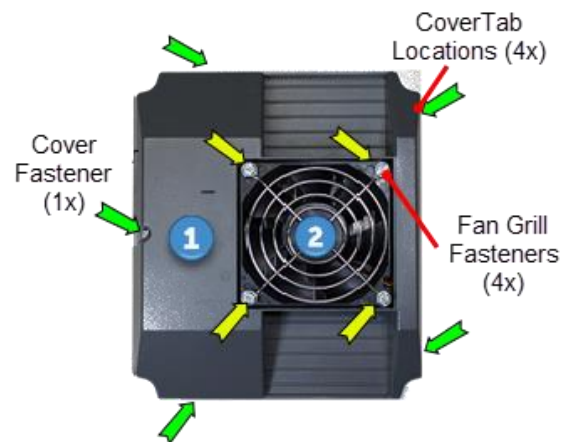


Figure 1

- 8 The new fan must be installed so the air flow is directed into the MC housing. Install the fan so that the air flow indicator arrow points into the MC housing (see fig.2). The new fan cable routing has changed. Feed the power cable thru the right cable housing opening (not the left opening) and install the new fan 3 (see fig. 2).



Note: The new fan power cable routing has changed. Route the cable thru the right housing opening not the left.

- 9 Reinstall the fan grill onto the fan and secure with the four screw fasteners.
- 10 Reconnect the fan power cable and install the top cover onto the MC housing. Make sure that the power cable is not pinched or damaged while snapping the top cover into the housing tabs. Secure top cover using the one screw fastener.
- 11 Reinstall the Motor Controller, refer to service manual "Motor Controller Installation" procedure.
- 12 Plug in the power cord and switch the power ON.
- 13 **P10, P20, & P30 consoles**

- a Clear the Error Log of any stored error codes: Hold down **PAUSE** to access the Error Log > select **OK** to view error codes, and then hold down **QUICK START** to clear the Error Log of all error codes.
- b Clearing the Error Log resets the ASL and MC status lights. Verify that the ASL status light is blue and the MC status light is green.

14 **P80 & P82 consoles**

- a Reset the ASL and MC status lights: Select **Operating Condition** > **Reset** softkey to reset the ASL and MC status lights. Verify the following Maintenance menu parameters:
 - **Recommended Action:** None
 - **Operating Condition:** Normal
 - **Active Status Light:** Solid Blue
- b Verify that the MC status light is now "green" and the ASL light is "solid blue".
- c Repeat selecting the **Back** softkey to exit and return to the "Welcome" banner home page.

- 15 Press **QUICK START** to start a manual work out. Make sure the fan is running, that the air flows into the MC housing, and there are no error code 14 events.



Note: The fan will only run after the running belt is moving.

- 16 Reinstall the hood.
- 17 Verify operation and return to service.

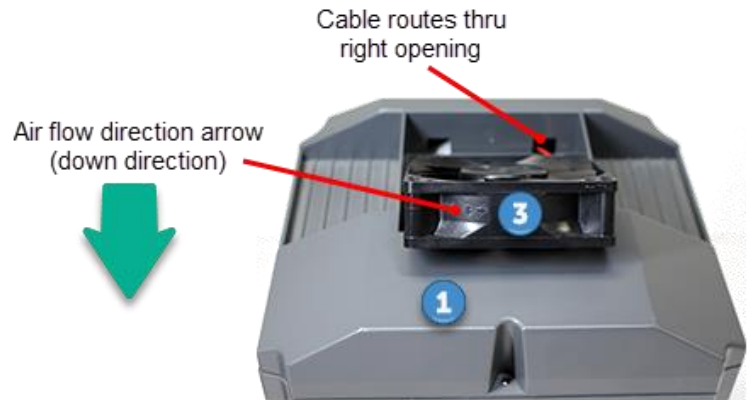


Figure 2